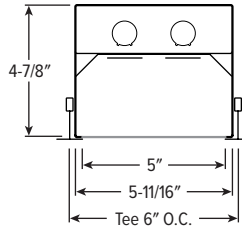
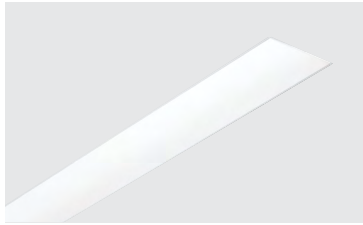


# LRX5 LED 5" Wide Linear Recessed



CATALOG #: \_\_\_\_\_

Type: \_\_\_\_\_

PROJECT: \_\_\_\_\_

## FEATURES

- Sleek design incorporates clean lines, slim styling, and diffused matte acrylic lens
- Attractive source of direct lighting for use in offices, hallways, conference rooms or common areas
- Lift and shift lens allows easy access to internal components
- For use as stand-alone fixture or in continuous rows
- Made Right Here® in the USA

## SPECIFICATIONS

- HOUSING** – 22-gauge die-formed, C.R.S.
- SHIELDING** – Lift-and-shift flat diffused matte acrylic, .080" thick
- FINISH** – 92% minimum average reflective white polyester powder coat bonded to phosphate-free, multi-stage pretreated metal. All parts painted after fabrication to facilitate installation, increase efficiency, and inhibit corrosion.
- ELECTRICAL** – High quality mid-power LED boards. L70 >50,000 hours.
- MOUNTING** – Designed for NEMA Type "G" 1" grid ceiling standard. NEMA Type "F" available.
- LISTINGS** –
  - cCSAus certified as luminaire suitable for dry or damp locations.
  - City of Chicago Environmental Air approved when specified with CP option.
  - IC-rated for direct contact with insulation.<sup>[15]</sup>
- WARRANTY** – 5-year limited warranty, see [hew.com/warranty](http://hew.com/warranty).

## ORDERING EXAMPLE: LRX5G-4-L20/835-DMA-OPTIONS-CONTROL-DIM-UNV

### ORDERING INFO

SERIES	FIXTURE STYLE	LENGTH	LUMENS <sup>[1]</sup>	CRI	CCT
LRX5	G	NEMA Type "G" <sup>[2]</sup>	<b>L8</b> 800lm <b>L12</b> 1,200lm <b>L15</b> 1,500lm <b>L20</b> 2,000lm	<b>8</b> 80 <b>9</b> 90 <sup>[4]</sup>	<b>27</b> 2700K <b>30</b> 3000K <b>35</b> 3500K <b>40</b> 4000K <b>50</b> 5000K
	F	NEMA Type "F" <sup>[3]</sup>			
	<b>Stand-alone</b> – 2', 4', 6' & 8' nominal lengths, fixture ships assembled. Example: 4 = 4'				
	<b>Row-mount</b> – Lengths specified in 2' increments Example: 12 = 12'				

### PRODUCT BUILDER

Simplify ordering & layout design with the Williams Linear Product Builder at [hew.com/product-builder](http://hew.com/product-builder)

SHIELDING	OPTIONS	CONTROL <sup>[5]</sup>
<b>DMA</b> Diffuse matte acrylic lens, .080" thick	<b>EM/10W</b> 10-watt emergency battery <sup>[6]</sup> <b>EM/10WRM</b> Remote mount 10-watt emergency battery <b>EM/10WLP</b> Low-profile 10-watt emergency battery <sup>[7]</sup> <b>(L__)</b> Additional lower lumen packages available Example: 1,800 lumens = LRX5G-4-L20/835-(L18) <sup>[8]</sup> <b>CP</b> Chicago plenum (CCEA) <sup>[9]</sup>	– None <b>VDO</b> Lutron vive integral fixture control, RF with daylight and occupancy sensor (DFCSJ-OEM-OCC) <sup>[10]</sup> <b>VRF</b> Lutron vive integral fixture control, RF only (DFCSJ-OEM-RF) <sup>[11]</sup>

DRIVER <sup>[12]</sup>	VOLTAGE
<b>DIM</b> Driver with external dimming wires	<b>120</b> 120V
<b>DRV</b> Driver without external dimming wires	<b>277</b> 277V
<b>DSR</b> Sensor-ready driver without external dimming wires <sup>[13]</sup>	<b>UNV</b> 120-277V
	<b>347</b> 347V <sup>[14]</sup>

## NOTES

- Lumens per foot output based on 3500 CCT. Actual lumens may vary +/-5%. Additional lumen packages available, see Options.
- Factory-installed earthquake clips provided.
- See page 2 for NEMA TYPE "F" INSTALLATION.
- Extended lead times may apply. Consult factory for availability.
- See page 3 for CONTROL DETAILS.
- Not available with 2' length. Not available with F Fixture Style when specified with 4' length.
- Not available with 2' length.
- Specify in increments of 100 nominal lumens. Option must be specified with next higher lumen package.
- NEMA Type "G" only.
- DSR or LDE Drivers only. LDE drivers require driver interface.
- DSR or LDE Drivers only. LDE drivers require driver interface.
- See page 5 for ADDITIONAL DRIVER OPTIONS.
- VDO and VRF Controls only.
- Not available with EM batteries.
- Not available with L20 lumen package.



# LRX5 LED 5" Wide Linear Recessed

## FIXTURE PERFORMANCE DATA

	PER FOOT		
	DELIVERED LUMENS	WATTAGE	EFFICACY (lm/W)
L8	803	6.4	125.3
L12	1204	9.6	124.9
L15	1513	12.2	124.4
L20	2006	16.4	122.7

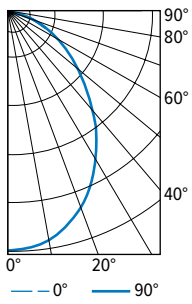
- Photometrics tested in accordance with IESNA LM-79. Results shown are based on 25°C ambient temperature.
- Wattage shown is average for 120V through 277V input.
- Results based on 3500K, 80 CRI, actual lumens may vary +/-5%
- Use multiplier table to calculate additional options.

## MULTIPLIER TABLE

	COLOR TEMPERATURE	
	CCT	CONVERSION FACTOR
80 CRI	2700K	0.97
	3000K	0.99
	3500K	1.00
	4000K	1.03
	5000K	1.06
90 CRI	2700K	0.80
	3000K	0.82
	3500K	0.83
	4000K	0.86
	5000K	0.89

## PHOTOMETRY

LRX5-4-L20/835-DMA-DRV-UNV Total Luminaire Output: 8024 lumens; 65.4 Watts | Efficacy: 123 lm/W | 80 CRI; 3500K CCT

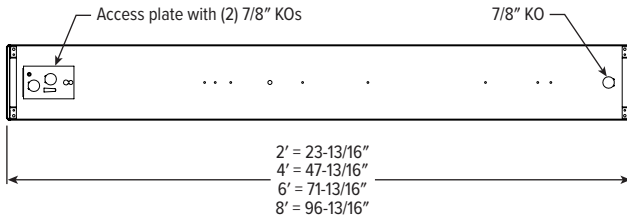


CANDLEPOWER DISTRIBUTION	VERTICAL ANGLE	HORIZONTAL ANGLE			ZONAL LUMENS
		0°	45°	90°	
	0	3512	3512	3512	
	5	3539	3478	3478	331
	15	3400	3304	3266	934
	25	3106	2938	2826	1356
	35	2653	2417	2263	1520
	45	2077	1821	1666	1422
	55	1464	1251	1133	1141
	65	910	775	704	784
	75	444	386	357	419
	85	108	100	97	116
	90	7	6	9	

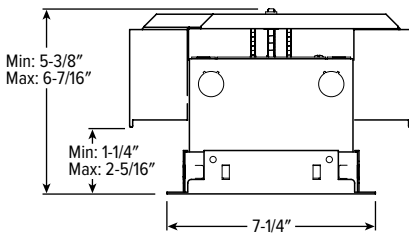
LUMEN SUMMARY	ZONE	LUMENS	% FIXTURE
	0 - 30	2621	33
	0 - 40	4142	52
	0 - 60	6704	84
	0 - 90	8024	100
	0 - 180	8024	100

## FIXTURE DETAILS

### BACKVIEW



## NEMA TYPE "F" INSTALLATION



RECOMMENDED CEILING OPENING	
2'	6-5/8" x 24"
4'	6-5/8" x 48"
6'	6-5/8" x 72"
8'	6-5/8" x 96"

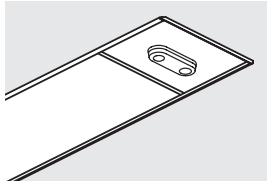
For continuous row mounting, add 24" for each additional 2' of row length.



# LRX5 LED 5" Wide Linear Recessed

## CONTROL DETAILS

### SENSOR PLACEMENT

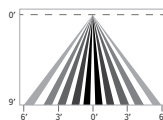


### VDO

SPECIFICATIONS	
TYPE	PIR Motion + Daylight
MOUNTING HEIGHT	8' – 12'
DETECTION ANGLE	360°
TEMPERATURE RANGE	0° to 55°C
RELATIVE HUMIDITY	0 to 90%, non-condensing
COMMISSIONING	App (iOS or Android)
MANUFACTURER	Lutron

### SENSOR COVERAGE PATTERNS

9' height: ø12' coverage



### MOTION SENSOR COVERAGE

CEILING HEIGHT	COVERAGE AREA (SQ FT)
8'	114
9'	144
10'	178
12'	256

### VIVE CONTROL OPTIONS

CATALOG NUMBER	DESCRIPTION
VDO	Lutron Vive integral fixture control, RF with daylight and occupancy sensor (DFCSJ-OEM-OCC), for use with sensor-ready driver
VRF	Lutron Vive integral fixture control, RF only (DFCSJ-OEM-RF), for use with sensor-ready driver
VDO/DBI	Lutron Vive integral fixture control, RF with daylight and occupancy sensor (DFCSJ-OEM-OCC) and digital link interface, for use with Lutron Hi-lume 1% EcoSystem dimming LED driver
VRF/DBI	Lutron Vive integral fixture control, RF only (DFCSJ-OEM-RF) and digital link interface, for use with Lutron Hi-lume 1% EcoSystem dimming LED driver

## ADDITIONAL DRIVER OPTIONS

Note: Lumen restrictions apply, consult product builder at [hew.com/product-builder](http://hew.com/product-builder).

CATALOG NUMBER	DESCRIPTION
DRV	Driver prewired for non-dimming applications
DIM	Dimming driver prewired for 0-10V low voltage applications
DIM1	1% dimming driver prewired for 0-10V low voltage applications
DIM LINE	Line voltage dimming driver (TRIAC and ELV compatible, 120V only)
DIM TRC	Line voltage dimming driver (TRIAC compatible, 120V only)
DSR	Sensor-ready driver
SD40	40% step-dimming driver
SD50	50% step-dimming driver
DALI	DALI dimming driver
LTE LINE	Lutron Hi-lume 1% 2-wire dimming driver forward phase line voltage controls (120V only)
LDE1	Lutron Hi-lume 1% EcoSystem dimming LED driver
ELDO SOLOB	EldoLED Solodrive, 0.1% dimming driver for 0-10V controls
ELDO SOLOB DALI	EldoLED Solodrive, 0.1% dimming driver for DALI controls
ELDO ECO1	EldoLED Ecodrive, 1% dimming driver for 0-10V controls
ELDO ECO1 DALI	EldoLED Ecodrive, 1% dimming driver for DALI controls

