

CATALOG #: \_\_\_\_\_

Type: \_\_\_\_\_

PROJECT: \_\_\_\_\_

## FEATURES

- Combines the look of continuous crown molding with big fixture performance in a compact, ADA compliant, architecturally styled package
- Mount in a continuous row to resemble architectural crown molding
- Common applications include smaller offices, corridors, healthcare facilities, and spaces with low to moderate ceiling heights
- Provides indirect illumination in locations where it is important to avoid typical glare
- Heavy-duty hook-on mounting brackets make it easy to securely install and level fixtures
- Joiner and alignment system permit mounting in continuous rows with hairline seams that virtually disappear
- Optional anti-microbial white finish available for use in healthcare applications
- Made Right Here® in the USA

## SPECIFICATIONS

- HOUSING/REFLECTOR** – Seam-welded extruded aluminum.
- WEIGHT** – 5 lbs. per foot
- END CAPS** – Aluminum, welded, seam-filled and finished at ends of individual units and rows.
- REFLECTIVE SURFACES** – 92% minimum average reflective white polyester powder coat on interior steel components.
- SHIELDING** – Frosted acrylic, .125" thick.
- FINISH** – Textured matte white polyester TGIC powder coat bonded to phosphate-free, multi-stage pretreated metal. All parts painted after fabrication to facilitate installation, increase efficiency, and inhibit corrosion.
- ELECTRICAL** – High quality mid-power LED boards. L70 at 50,000 hours.
- MOUNTING** – Wall mount, individual units or continuous rows.
- LISTINGS** –
  - cCSAus certified as luminaire suitable for dry or damp locations
  - ADA Compliant
- WARRANTY** – 5-year limited warranty, see [hew.com/warranty](http://hew.com/warranty).

## ORDERING EXAMPLE: LPC CL - 4 - L43/835 - F / F - OPTIONS - DIM - UNV

### ORDERING INFO

SERIES	STYLE	LENGTH	LUMENS <sup>[1]</sup>	CRI	CCT	FIXTURE TYPE
LPC	CL Classic	4 4'	4'	8 80	30 3000K	F Electrical feeder unit <sup>[2]</sup>
	CV CurviLine	8 8'	L43 4,300lm		35 3500K	J Joiner unit <sup>[3]</sup>
					40 4000K	E End unit <sup>[4]</sup>
			L86 8,600lm		S Stand-alone unit <sup>[5]</sup>	

END CAP STYLE	OPTIONS <sup>[6]</sup>	CONTROL <sup>[7]</sup>	VOLTAGE
F Flat ends	GLR Fuse, fast blow <sup>[9]</sup>	DIM Dimming driver	120 120V
M Mitered ends <sup>[8]</sup>	C2_ Two-circuit quick-connect wiring harness <sup>[10]</sup>	DRV Non-dimming driver	277 277V
	(L_) Additional lower lumen packages available. Example: 4,000 lumens = LPCCL-4-L43/840-(L35) <sup>[11]</sup>		UNV 120-277V
	AMW Anti-microbial white finish		

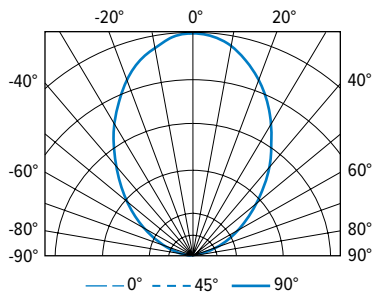
## NOTES

- Lumen output based on 3500 CCT. Actual lumens may vary +/-5%.
- Quick-connect wiring harness, left end cap installed.
- Quick-connect wiring harness, no end caps.
- Quick-connect wiring harness, right end cap installed.
- Two end caps installed.
- See page 3 for FINISH OPTIONS.
- See page 2 for ADDITIONAL CONTROL OPTIONS.
- Increases overall length. See page 3 for FIXTURE DETAILS.
- Specify voltage, 1 per driver.
- See page 3 for QUICK CONNECT OPTIONS.
- Specify in increments of 100 nominal lumens. Option must be specified with next higher lumen package.



## PHOTOMETRY

LPCL-4-L43/835-DIM-UNV 02/23/15 | Total Luminaire Output: 4351 lumens; 51.5 Watts | Efficacy: 84 lm/W | 80 CRI; 3500K CCT



VERTICAL ANGLE	HORIZONTAL ANGLE					ZONAL LUMENS
	0°	45°	90°	135°	180°	
90	3	4	14	7	11	
95	37	56	104	61	47	79
105	207	243	259	214	174	244
115	419	444	471	420	353	430
125	659	698	732	668	605	614
135	949	995	1027	953	876	752
145	1274	1309	1334	1265	1197	804
155	1576	1597	1607	1567	1510	727
165	1829	1833	1841	1821	1805	513
175	1956	1953	1968	1952	1959	185
180	1978	1978	1978	1978	1978	

LUMEN SUMMARY	ZONE	LUMENS	% FIXTURE
	90 - 120	753	17
	90 - 130	1366	31
	90 - 150	2922	67
	90 - 180	4346	100
	0 - 180	4351	100

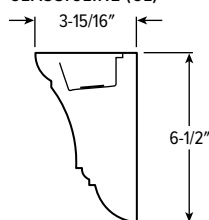
## ADDITIONAL CONTROL OPTIONS

Note: Lumen restrictions apply, consult product builder at [hew.com/product-builder](http://hew.com/product-builder).

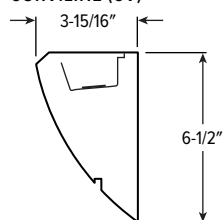
CATALOG NUMBER	DESCRIPTION
DRV	Driver prewired for non-dimming applications
DIM	Dimming driver prewired for 0-10V low voltage applications
DIM1	1% dimming driver prewired for 0-10V low voltage applications
DIM LINE	Line voltage dimming driver (TRIAC and ELV compatible, 120V only)
DIM TRC	Line voltage dimming driver (TRIAC compatible, 120V only)
SD40	40% step-dimming driver
SD50	50% step-dimming driver
DALI	DALI dimming driver
LTE LINE	Lutron Hi-lume 1% 2-wire dimming driver forward phase line voltage controls (120V only)
LDE1	Lutron Hi-lume 1% EcoSystem dimming LED driver
ELDO SOLOB	EldoLED Solodrive, 0.1% dimming driver for 0-10V controls
ELDO SOLOB DALI	EldoLED Solodrive, 0.1% dimming driver for DALI controls
ELDO ECO1	EldoLED Ecodrive, 1% dimming driver for 0-10V controls
ELDO ECO1 DALI	EldoLED Ecodrive, 1% dimming driver for DALI controls

## CROSS SECTIONS

CLASSICLINE (CL)

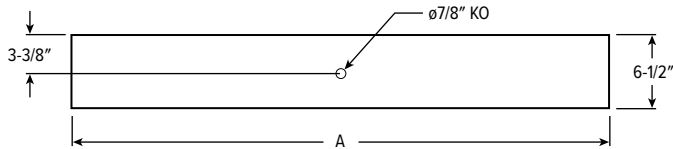


CURVILINE (CV)



## FIXTURE DETAILS

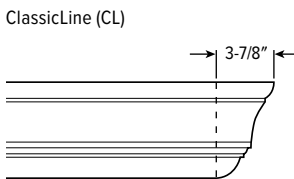
### BACKVIEW



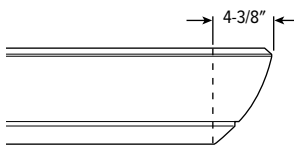
NOMINAL LENGTH	ACTUAL LENGTH (A)
4'	46-3/16"
8'	92-1/8"

Note: Mitered ends add to overall length, see details at right.

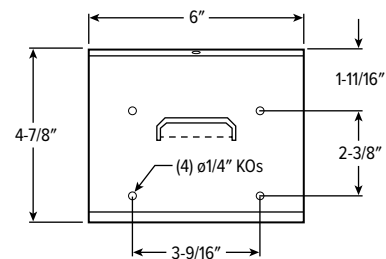
### MITERED END DETAILS



### CurviLine (CV)



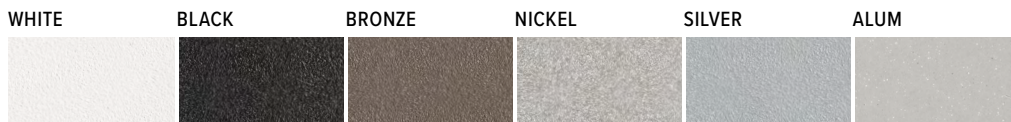
### WALL MOUNT BRACKET



## FIXTURE TYPE DETAILS

	F	J	E	S
MITERED				
FLAT				

## FINISH OPTIONS



For custom color, please specify RAL code or a manufacturer code with description. All custom colors other than RAL require two sample swatches, minimum 1" square.

## QUICK CONNECT OPTIONS

Note: Quick connect wiring required for row mounting. Length restrictions may apply, consult product builder at [hew.com/product-builder](http://hew.com/product-builder).

DESIGNATION	NUMBER OF WIRES (EXCLUDING GROUND)	WIRE COLORS	WIRE COLOR/POWER SUPPLY FACTORY CONNECTIONS	TYPICAL USE
C2B	3	White, Black, Red	White, Black	Alternating Circuits
C2BR	3	White, Black, Red	White, Black, Red	ON/OFF Switching (DRV) or Line Voltage dimming (DIM LINE) when equipped w/EM Power Supply (EM/10W)
C2R	3	White, Black, Red	White, Red	Alternating Circuits
C2BW/R	5	White, Black, Red, Gray, Green	White, Black/Red, Gray	0-10V 4-wire Low Voltage Dimming (DIM)

