

CATALOG #: _____

Type: _____

PROJECT: _____

FEATURES

- Support human-centric design with adaptive, individualized lighting using tunable white light
- Fixture can be surface mounted or semi-recessed for ultra-low-profile look
- Aircraft cable or pendant mount fixture for additional mounting choices
- Decorative die-cast aluminum end caps provide high-end appearance
- Optional anti-microbial white finish available for use in healthcare applications
- Maximize energy savings with efficacies as high as 125 lm/W
- Made Right Here® in the USA

SPECIFICATIONS

- HOUSING** – .040" die-formed aluminum with die-cast decorative end caps.
- SHIELDING** – Ribbed acrylic diffuser.
- FINISH** – Textured matte white polyester TGIC powder coat bonded to phosphate-free, multi-stage pretreated metal. All parts painted after fabrication to facilitate installation, increase efficiency, and inhibit corrosion.
- ELECTRICAL** – High quality mid-power LED board. L70 > 60,000 hours per IES TM-21. Tunable White products use LEDs of multiple CCTs and may produce a perceptibly different shade of white from single-CCT products at the same CCT. All CCTs are within 3 MacAdam ellipses.
- MOUNTING** – Semi-recessed in NEMA Type "G" ceiling, surface (ceiling or wall), or suspended.
- LISTINGS** – cCSAus certified as luminaire suitable for dry or damp locations.
- WARRANTY** – 5-year limited warranty, see hew.com/warranty.

ORDERING EXAMPLE: ASM - 4 - L46/8TW - P - F - A - AC(Y12)/D24 - OPTIONS - DALI - UNV

ORDERING INFO

SERIES	LENGTH	LUMENS ^[1]	CRI	CCT	MOUNTING TYPE	FIXTURE TYPE
ASM	4 4'	4'	8 80	TW Tunable white (3000K-5000K)	S Surface	F Electrical feeder unit ^[5]
	8 8' ^[2]	L25 2,500lm	9 90 ^[3]		P Suspended	J Joiner unit ^[6]
		L46 4,600lm		TW2 Tunable white (2700K-6500K)	R Semi-recessed ^[4]	S Stand-alone unit ^[7]
		8'				
		L50 5,000lm				
		L92 9,200lm				

SHIELDING ^[8]	MOUNTING (EXAMPLE: AC(Y12)/D24) ^[9]	OPTIONS ^[10]
A Ribbed acrylic diffuser	ADJUSTABLE AIRCRAFT CABLE	EM/10WLP Low-profile 10-watt LED emergency battery
	Prefix Type Length	AMW Anti-microbial white finish
	ACY(Y12)/ D 1" grid & hardpan 24 24"	(L_) Additional lower lumen packages available.
	N 9/16" grid 48 48"	Example: 3,500 lumens =
	S Slot grid 96 96"	ASM-4-L46/8TW-A-(L35) ^[11]
	PENDANT MOUNT ^[12]	
	SS-__ Specify length in inches ^[13]	

CONTROL ^[14]	VOLTAGE
DALI Driver prewired for DALI applications	120 120V
DIM (1) 0-10V signal to control dimming	277 277V
(1) 0-10V signal to control CCT	UNV 120-277V
DMX Driver prewired for DMX applications	
PSQ Lutron T-Series 2-channel tunable white 1%.	

NOTES

- Lumen output based on 4000 CCT. Actual lumens may vary +/-5%, see page 2 for FIXTURE PERFORMANCE DATA.
- Ships with (2) 4' lenses.
- Extended lead times may apply. Consult factory for availability.
- Available in stand-alone fixtures only.
- Two end caps packed with fixture, quick-connect wiring harness. Suspended includes straight white cord standard. Wire gauge to be determined by row length.
- Quick-connect wiring harness.
- Two end caps included. Suspended includes straight white cord standard. Wire gauge to be determined by row length.
- See page 2 for FIXTURE DETAILS.
- See page 3 for MOUNTING DETAILS. Power cord provided with aircraft cables only. Specify with suspended mounting type only.
- See page 3 for FINISH OPTIONS.
- Specify in increments of 100 nominal lumens. Option must be specified with next higher lumen package.
- 3/8" IPS Stem and ø5" canopy.
- 4" minimum.
- See page 3 for CONTROL DETAILS.



FIXTURE PERFORMANCE DATA

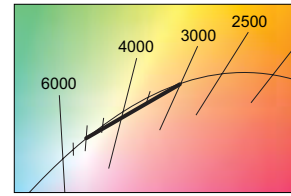
	LED PACKAGE	DELIVERED LUMENS	WATTAGE	EFFICACY (lm/W)
4'	L25	2550	21.4	119.2
	L46	4670	39.8	117.3
8'	L50	5100	40.7	125.4
	L92	9340	79.6	117.3

- Photometrics tested in accordance with IESNA LM-79. Results shown are based on 25°C ambient temperature.
- Wattage shown is average for 120V through 277V input.
- Results based on 4000K, 80 CRI, actual lumens may vary +/-5%
- Use multiplier table to calculate additional options.

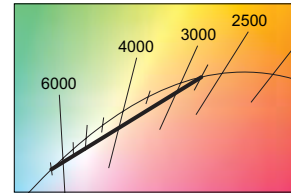
MULTIPLIER TABLE

	COLOR TEMPERATURE				
	CCT	TW		TW2	
		LUMENS	WATTAGE	LUMENS	WATTAGE
80 CRI	2700K	-	-	0.93	1.02
	3000K	0.95	1.04	0.95	1.01
	3500K	0.98	1.02	0.98	1.00
	4000K	1.00	1.00	1.00	1.00
	5000K	0.96	1.04	1.02	1.00
	6500K	-	-	1.01	1.04
90 CRI	2700K	-	-	0.93	1.02
	3000K	0.91	1.03	0.95	1.01
	3500K	0.96	1.01	0.98	1.00
	4000K	1.00	1.00	1.00	1.00
	5000K	1.03	1.03	1.03	1.00
	6500K	-	-	1.02	1.04

TW

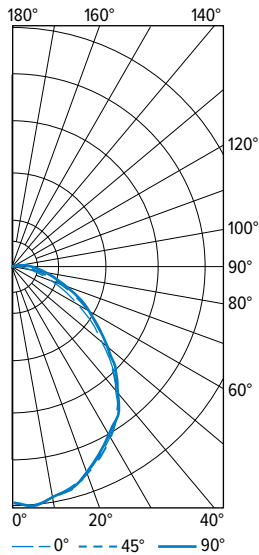


TW2



PHOTOMETRY

ASM-4-L46/8TW-A-S-DALI-UNV Total Luminaire Output: 4670 lumens; 39.8 Watts | Efficacy: 117.3 lm/W | 80 CRI; 4000K CCT

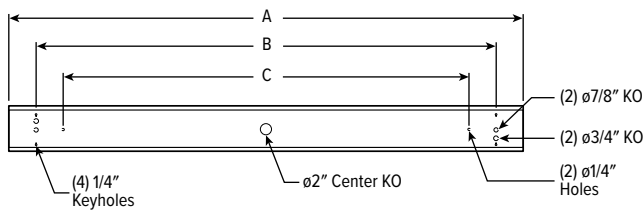


VERTICAL ANGLE	HORIZONTAL ANGLE			ZONAL LUMENS
	0°	45°	90°	
0	1787	1787	1787	
5	1817	1815	1815	171
15	1738	1732	1726	485
25	1572	1561	1554	717
35	1366	1364	1364	843
45	1043	1072	1079	819
55	699	763	778	674
65	410	502	520	482
75	189	287	305	287
85	48	136	165	135
90	11	77	110	
95	0	40	72	45
105	0	0	24	10
115	0	0	0	1
125	0	0	0	0
135	0	0	0	0
145	0	0	0	0
155	0	0	0	0
165	0	0	0	0
175	0	0	0	0
180	0	0	0	0

LUMEN SUMMARY	ZONE	LUMENS	% FIXTURE
	0 - 30	1374	29
	0 - 40	2217	48
	0 - 60	3709	79
	0 - 90	4613	99
	90 - 120	57	1
	90 - 150	57	1
	90 - 180	57	1
	0 - 180	4670	100

FIXTURE DETAILS

BACKVIEW



	A	B	C
4'	46-13/16"	40"	32"
8'	93-5/8"	87"	80"

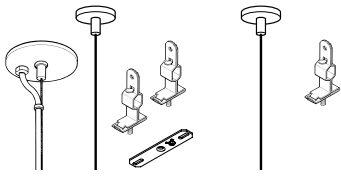
Dimension A is for row-mounted units without end caps. End caps add 3/4" to dimension A.



MOUNTING DETAILS

SUSPENDED MOUNTING TYPE

Standard Hardware (Grid and Hardpan)

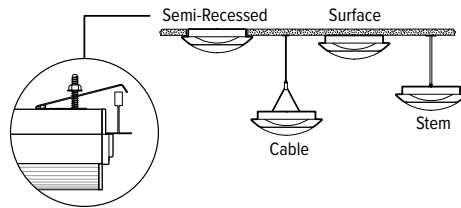


Power End/Stand-Alone

Row Mount Support

- Fixtures specified with suspended mounting type are provided with adjustable length aircraft cables with two-point "Y" connectors and mounting hardware, must specify.
- Electrical supply is brought into the feeder fixture, either as part of a row or as a stand-alone unit. Joiner fixtures complete the row.
- The feeder kits are standard with a 5" canopy to cover the junction box and a 2" canopy at the non-feed point. No J-box is required at non-feed points.

CONTINUOUS ROW

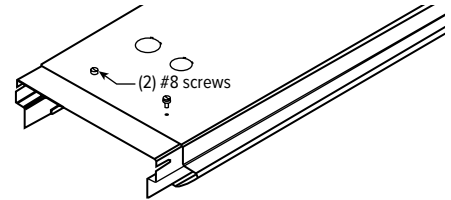


Semi-recessed model is suitable for installation in NEMA Type "G" ceiling system of 1" wide (nominal) tees mounted across ends of fixture 48" O.C., using factory furnished mounting brackets. Fixtures may be mounted in continuous row. Ceiling tiles are supported along sides by fixture housing. Fixture protrudes 2" below ceiling plane.

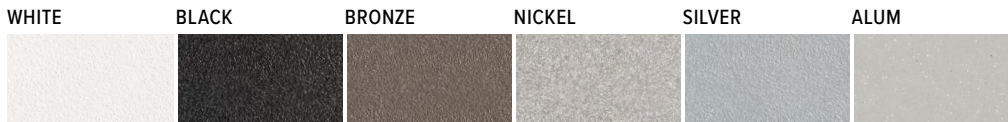
Depending on installation method, cable mounting may require additional counter-weights due to side-mounted driver.

ROW ALIGNER

(not available with semi-recessed units)



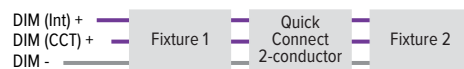
FINISH OPTIONS



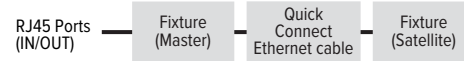
For custom color, please specify RAL code or a manufacturer code with description. All custom colors other than RAL require two sample swatches, minimum 1" square.

CONTROL DETAILS

DIM



DMX



DALI



LUTRON T-SERIES

